

COMPANY PROFILE

PARTENZA®

YOUR VISION

IN EVERY
DETAIL

CONTENT

- **06**
WHO WE ARE
- **08**
OUR SERVICES
- **10**
OUR WORK PROCESS
- **12**
WHY CHOOSE US
- **14**
OUR FACTORIES & TECHNOLOGIES
- **20**
CERTIFICATES
- **24**
OUR PARTNERS
- **26**
OUR PROJECTS
- **92**
HOW MANUFACTURED
- **100**
SHIPPING & PACKAGING
- **102**
PARTENZA & SUSTAINABILITY
- **106**
CONTACT INFORMATION

PARTENZA





WHO WE ARE

PARTENZA, established in Italy-1989, with a new branch in Turkey and a head office in Istanbul-2019.

Inspired by the Italian word referring to the start point, PARTENZA can definitely be your first and foremost starting point of furnituring and decoration, were we put our 30 years of expertise at your service.

Our factories produce and provide joinery, furniture and metal works.

PARTENZA boasts the collective experience of over 500 skilled employees, 3000 m2 of factory area and more than 1000 accomplished projects (hotels, restaurants and villas).

We are proud to have succeeded in the middle east; especially in Saudi Arabia, Dubai and Qatar.



— OUR SERVICES

PARTENZA offers the **designing & manufacturing** of joinery, furniture, metal work in addition of consulting services. With our extensively experienced team, we are able to reflect clients' dream designs and concepts into reality taking in consideration achieving their vision on time and within their own **budget**.

PARTENZA execute **unmistakable** end-to-end residential, commercial and hospitality designs prompt on time through step-by-step planning, sourcing certified raw materials, **cutting-edge machinery** and a team of innovative interior designers with **high techniques**.



OUR WORK PROCESS

1

MEET & AGREE

PARTENZA is glad to Meet the clients to acknowledge their **requirements**, alongside creating a work environment that focuses on what gives the best return of client's interests Considering **Budget, Quality & Time**.

2

DESIGN & CONCEPT

Our expert team of designers are always ready to present the best ideas to reflect client's concepts (If the clients have their own designs, our aim will be directed to focus on the details).

3

TIME SCHEDULE & MANUFACTURING

PARTENZA specifies the workflow to guarantee time & quality control according to the selected plan.

4

INSPECTION & PACKING

Client can check the production process in the final stage before packing takes place, whereas **PARTENZA** assures safe and smooth packing & loading. Request your fully-free sample delivered to you for any product (Joinery, Loose furniture or any Metal work) to inspect it.

WHY CHOOSE US



OUR QUALITY

Quality is a word used often, but here in PARTENZA we mean it. The quality of PARTENZA products is the sum of all the factors combined to make every single product unique. Precision and care given to every detail are done by master craftsmen, tailors and quality designers. All of our products are designed to be highly functional and Long-lasting

OUR ADVICE & SERVICES

Our talented Design Associates and engineers are ready to assist our clients with space planning, furniture selection, color and material suggestions for projects of any size, and the company's sophisticated management system ensures precision and flexibility with clients.

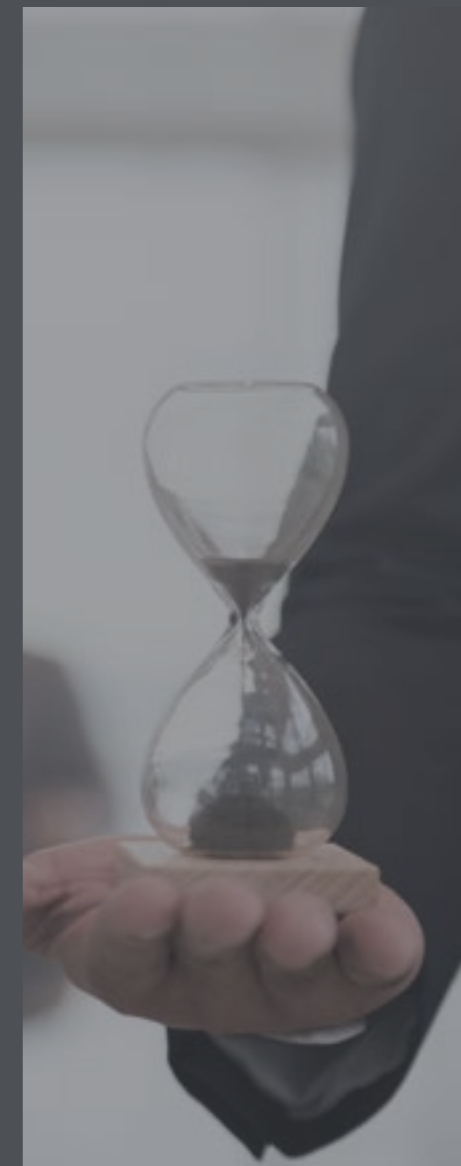


OUR TIME MANAGEMENT

The production process enhances craftsmanship's designs and supports it with technology in order to guarantee short delivery times.

OUR PRICING POLICY

PARTENZA prices are fair. We are on a deep understanding of our clients' needs and available budgets. There are no surprise bills. Any unexpected or additional expenses must be pre-approved by clients.



OUR
FACTORIES &
TECHNOLOGIES



7 AXIS ROBOT ARM CNC

THE 7 AXIS ROBOT ARM CNC COMES WITH SEVEN AXES OF MOTION, WHICH ALLOWS IT TO TACKLE COMPLEX TASKS WITH EASE AND HELP IN CARVING PRECISE COMPONENTS .



Our Technologies are a proof of our dedication to preserving traditional craftsmanship while embracing the possibilities of the digital age. Our furniture is born from the synergy of skilled designers, engineers, scientists who believe in the value of automation in the **manufacturing process** to ensure precision and efficiency.

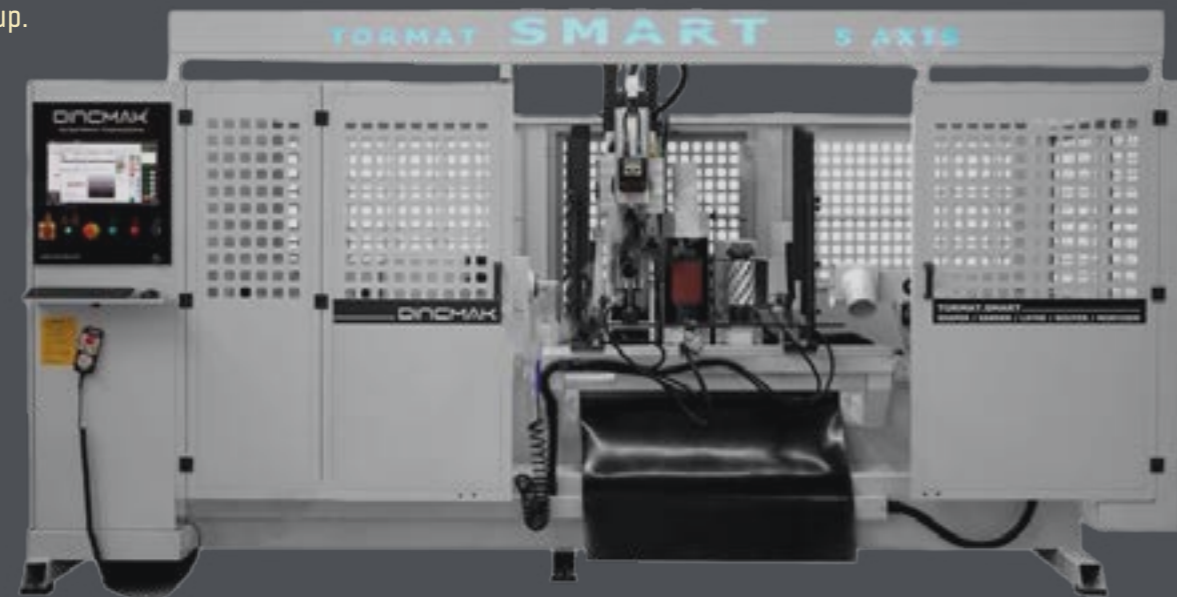
KUPER/FL/INNOVATION SERIES –LONGITUDINAL SPLICER

The KUPER/FL/Innovation Series Longitudinal Splicer is a veneer processing machine that covers a wide range of applications, from veneer clipping and splicing to veneer trimming, ensuring the highest quality in veneer work.



5 AXIS LATHE MACHINE

5-Axis Lathe machine is a flagship machine that can move and rotate the workpiece in five different directions, which offers a high degree of precision and versatility with infinite possibilities to process five sides of a part in a single setup.



CNC ROUTER MACHINE

CNC Router machine can curve a block of wood into intricate shapes or designs with incredible accuracy, thanks to its highly advanced computer programming and control systems.





— CERTIFICATES



CERTIFICATE

This is to Certify that the
Occupational Health and Safety Management System of

Partenza Mühendislik İnşaat İç ve Dış Ticaret Ltd. Şti.

Mahmutbey Mah. Taşocağı Yolu Cad. B Blok Ağaoğlu My Office No: 3 / 297 Bağcılar
İstanbul Turkey

has been independently assessed and is compliant
with the requirements of

ISO 45001:2018

This Certificate is applicable to the following product or service ranges:

Design and Production Any Kind of Hotel, Restaurant and Residential Furniture: Bed,
Wardrobe, Chairs, Sofa, Kitchen Cabinet, Table, Bar Counter, Service Station, Wooden
Pergola, Door, Window, Vanity. Wall Cladding, Joinery, Wood Work, Metal Work, Loose
Furniture.

Certificate No.: TR97752C-1

Date of initial registration	17 November 2022
Date of this Certificate	17 November 2022
Surveillance audit on or before	16 November 2023
Recertification Due / Certificate expiry	16 November 2025

This Certificate is property of LMS Certifications and remains valid
subject to satisfactory surveillance audits.


Director

For verification and updated information concerning the present certificate visit to www.lmscert.com
This Certificate is the property of LMS certification Limited and shall be returned immediately when demanded.



LMS Certification Limited
Labrynth Business Centre, 43 Middle Hill Gate, Stockport,
Great Manchester, Englad-SK1 3DG
Phone :+44 208 935 5094
Company No : 11029176
Visit : www.lmscert.com
E-mail : info@lmscert.com



CERTIFICATE

This is to Certify that the
Environmental Management System of

Partenza Mühendislik İnşaat İç ve Dış Ticaret Ltd. Şti.

Mahmutbey Mah. Taşocağı Yolu Cad. B Blok Ağaoğlu My Office No: 3 / 297 Bağcılar
İstanbul Turkey

has been independently assessed and is compliant
with the requirements of

ISO 14001:2015

This Certificate is applicable to the following product or service ranges:

Design and Production Any Kind of Hotel, Restaurant and Residential Furniture: Bed,
Wardrobe, Chairs, Sofa, Kitchen Cabinet, Table, Bar Counter, Service Station, Wooden
Pergola, Door, Window, Vanity. Wall Cladding, Joinery, Wood Work, Metal Work, Loose
Furniture

Certificate No.: TR97752B

Date of initial registration	17 November 2022
Date of this Certificate	17 November 2022
Surveillance audit on or before	16 November 2023
Recertification Due / Certificate expiry	16 November 2025

This Certificate is property of LMS Certifications and remains valid
subject to satisfactory surveillance audits.


Director

For verification and updated information concerning the present certificate visit to www.lmscert.com
This Certificate is the property of LMS certification Limited and shall be returned immediately when demanded.



LMS Certification Limited
Labrynth Business Centre, 43 Middle Hill Gate, Stockport,
Great Manchester, Englad-SK1 3DG
Phone :+44 208 935 5094
Company No : 11029176
Visit : www.lmscert.com
E-mail : info@lmscert.com





CERTIFICATE

**Partenza Mühendislik İnşaat İç ve Dış
Ticaret Ltd. Şti.**

Mahmutbey Mah. Taşocağı Yolu Cad. B Blok Ağaoğlu My
Office No: 3 / 297 Bağcılar İstanbul Turkey

The above-mentioned organization implements and maintains a management system in the following scope, and its compliance with the standard has been approved by KingCert.

ISO 9001:2015 Quality Management System

Scope : Design and Production Any Kind of Hotel, Restaurant and Residential Furniture: Bed, Wardrobe, Chairs, Sofa, Kitchen Cabinet, Table, Bar Counter, Service Station, Wooden Pergola, Door, Window, Vanity, Wall Cladding, Joinery, Wood Work, Metal Work, Loose Furniture
IAF/EA Code: 23

This certificate is valid during above mentioned company perform the requirements of ISO 9001:2015 standard and fulfill all responsibilities to KingCert.

Certificate Publication Date : 02.11.2022
Cert. Last Issue Date : 02.11.2022
Cert. Expiry Date : 01.11.2023
Cert. Period Exp. Date : 01.11.2025
Certificate Number : I1667312284Q


King Cert International Certification Ltd.
Director



King Cert International
Certification Ltd.
Manastirski Livadi, Str. Lavski
Rid 19, Sofia Bulgaria
info@KingCert.com
FR.25. / 01.09.2016 / 04.06.2019 / 02

Hereby, King Cert International Certification Ltd., certifies that the above stated company have the appropriate management system according to the requirements of the above standards. This certificate is valid for three years as long as the system effectively maintained and surveillance audits are carried out. The validity of the certificate can be checked through www.KingCert.com. The certificate is property of King Cert International Certification Ltd. and shall be returned if so requested.



CERTIFICATE

Certificate No: A-22118

**Partenza Mühendislik İnşaat İç ve Dış
Ticaret Ltd. Şti.**

Mahmutbey Mah. Taşocağı Yolu Cad. B Blok Ağaoğlu My Office No: 3 /
297 Bağcılar İstanbul Turkey

This certificate is issued for the above-mentioned company, according to the following scope given by the WQR Certification.

FSC

Forest Stewardship Council Certificate

Scope of Certification

Design and Production Any Kind of Hotel, Restaurant and Residential Furniture: Bed, Wardrobe, Chairs, Sofa, Kitchen Cabinet, Table, Bar Counter, Service Station, Wooden Pergola, Door, Window, Vanity, Wall Cladding, Joinery, Wood Work, Metal Work, Loose Furniture

Release Date
02.11.2022
Last Issue Date
02.11.2022
Expiry Date
01.11.2023
Period Exp. Date
01.11.2025


Certification Manager

WQR International Certification Ltd.
www.wqcert.com | info@wqcert.com

The validity of the certificate can be checked through www.wqcert.com.

— OUR PARTNERS



PROJECTS

HOTELS

FOUR SEASONS HOTEL /MOCKUP
JEDDAH - KSA

NOVOTEL HOTEL / TYPICAL FLOOR
RIYADH OLAYA - KSA

NOVOTEL HOTEL / PUBLIC AREA
RIYADH OLAYA - KSA

OMR HOTEL
LONDON - UK

BOURNEMOUTH HOTEL
LONDON - UK

RADISSONBLU HOTEL
MOSCOW - RUSSIA

BLU OASIS ZANZBAR HOTEL
ZANZIBAR - TANZANIA

BOKA PLACE HOTEL
TIVAT - MONTENEGRO

HILTON GARDEN INN HOTEL
DOHA - QATAR

HILTON GARDEN INN HOTEL
TBILISI - GEORGIA

SHERATON BATUMI HOTEL
BATUMI - GEORGIA

LOTTE HOTEL
MOSKOW - RUSSIA

BLU OASIS RESORT
ZANZIBAR - TANZANIA

INTERCONTINENTAL
ISTANBUL - TURKEY

RIXOS KRASNAYA POLYANA
MOSCOW - RUSSIA

DOUBLE TREE BY HILTON /MOCKUP ROOM
JIZAN - JEDDAH - K.S.A

SHERATON BATUMI HOTEL / PUBLIC AREA
BATUMI - GEORGIA

DOUBLE TREE BY HILTON / PUBLIC AREA
HATAY - TURKEY

ABU DHABI PLAZA .SHERATON HOTEL / APARTMENT
ASTANA - AZERBAIJAN

ABU DHABI PLAZA SHERATON HOTEL
ASTANA - KAZAKHISTAN

ILICA HOTEL SPA & WELLNESS THERMAL RESORT
CESME IZMIR - TURKEY

HYATT REGENCY HOTEL
ATAKOY - ISTANBUL - TURKEY

RAMADA HOTEL
BAKU - AZERBAIJAN

DIVAN HOTEL / SPA
ISTANBUL - TURKEY

KAYA LALEH PARK HOTEL
TEBRIZ - IRAN

JUMEIRAH HOTEL
BAKU - AZERBAIJAN

TAXIM HILL HOTEL
ISTANBUL - TURKEY

DOUBLE TREE BY HILTON (MODA) HOTEL
ISTANBUL - TURKEY

PROJECTS
RESTAURANT & CAFÉ

— EM SHEREF
ALKHOBAR - KSA

— GODIVA / MALL OF EMIRATES
DUBAI - UAE

— GODIVA / ROSHANA
JEDDAH - KSA

— GODIVA / RED SEA
JEDDAH - KSA

— NOOA
RIYADH - KSA

— WADI
RIYADH - KSA

— MNKY HOUSE
RIYADH - KSA

— CELLO
RIYADH - KSA

— BALCONA
RIYADH - KSA

— BURJ ELHAMAM / RIYADH FRONT
RIYADH - KSA

— BURJ ELHAMAM / ALDABAB
RIYADH - KSA

— ALMESHWAR
DUBAI - UAE

— DIFFERENT RESTAURANT
RIYADH - KSA

— CAMELLIA / RIYADH FRONT
RIYADH - KSA

— LOGMA / THE ZONE
RIYADH - KSA

— OLE / THE WALK
RIYADH - KSA

— KEY CAFÉ
JEDDAH - KSA

— TAKYA
RIYADH - KSA

— MARLENE
RIYADH - KSA

— CHUNK / ALSAFARAT
RIYADH - KSA

PROJECTS RETAIL SHOPS

GALLERY
RIYADH - KSA

LAZURDE
JEDDAH - KSA

LAZURDE
ABHA - KSA

DIOR / ISTIYNE PARK
ISTANBUL - TURKEY

HEKAYH
RIYADH - KSA

DIOR / ISTANBUL AIRPORT
ISTANBUL - TURKEY

DIOR
MOSCOW - RUSSIA

MITSUBISHI BRANCHES
ISTANBUL - TURKEY

TIFFANY & CO
BAKU - AZERBAIJAN

PRADA
ALMATY - KAZAKHSTAN

TIFFANY & CO
ISTANBUL - TURKEY

DOLCE & GABBANA
BUCHAREST - ROMANIA

PROJECTS VILLA & RESIDENCE

MR. NICKY VILLA
BUCHAREST - ROMANIA

KONACIK VILLAS
BATUMIBODRUM - TURKEY

PORTONOVI MARINA APARTMENTS
HERCEG NOVI - MONTENEGRO

PORTONOVI VILLAS
HERCEG NOVI - MONTENEGRO

CEM VILLA
ISTABUL - TURKEY

MERIDYEN SUITES
ISTANBUL - TURKEY

XEZRI VILLA
BAKU - AZERBAIJAN

FOUR WINDS RESIDENCE
ISTANBUL - TURKEY

WINDOWIST PLAZA
ISTANBUL - TURKEY

ATAKAS
ISTANBUL - TURKEY

RESADIYE VILLAS
ISTANBUL - TURKEY

PROJECTS

OFFICE & BANK & AIRPORT

TFG
LONDON - UK

HML
LONDON - UK

OCH OFFICE
TBILISI - GEORGIA

SOLO BANK / BUSINESS BRANCH
TBILISI - GEORGIA

BAHRAIN AIRPORT
MANAMA - BAHRAIN

SOLO BANK BOG
BATUMI - GEORGIA

SOLO BANK BOG
TBILISI - GEORGIA

SOLO BANK BOG / GLDANI
TBILISI - GEORGIA

BANK OF GEORGIA
-GEORGIA

ALMATA OFFICE
ALMATY - KAZAKHSTAN

SHERATON BATUMI HOTEL

Location: BATUMI - GEORGIA



Stylish Room Furniture

The most important part of a guest's stay is the hotel room. Thanks to our exceptional furniture manufacturing abilities, we succeeded in creating a special experience for the visitors of the hotels.

From the cool dressers to the comfy seating close to the window, we provided only high-quality designs that created a suitable place to chill out and relax.



LOTTE HOTEL

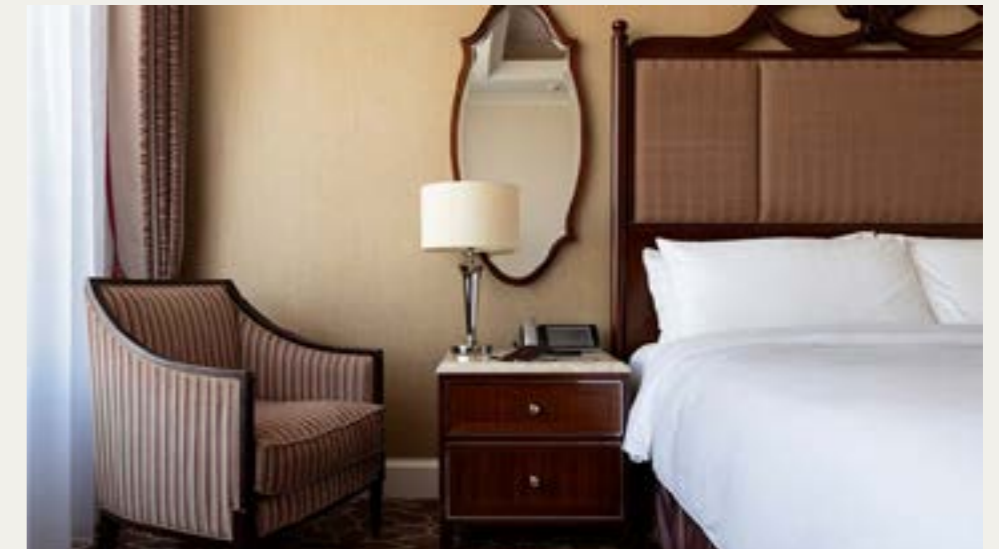
Location: MOSCOW



Stylish Room Furniture

The most important part of a guest's stay is the hotel room. Thanks to our exceptional furniture manufacturing abilities, we succeeded in creating a special experience for the visitors of the hotels.

From the cool dressers to the comfy seating close to the window, we provided only high-quality designs that created a suitable place to chill out and relax.



CONTINENTAL HOTEL

Location: Istanbul, Turkey



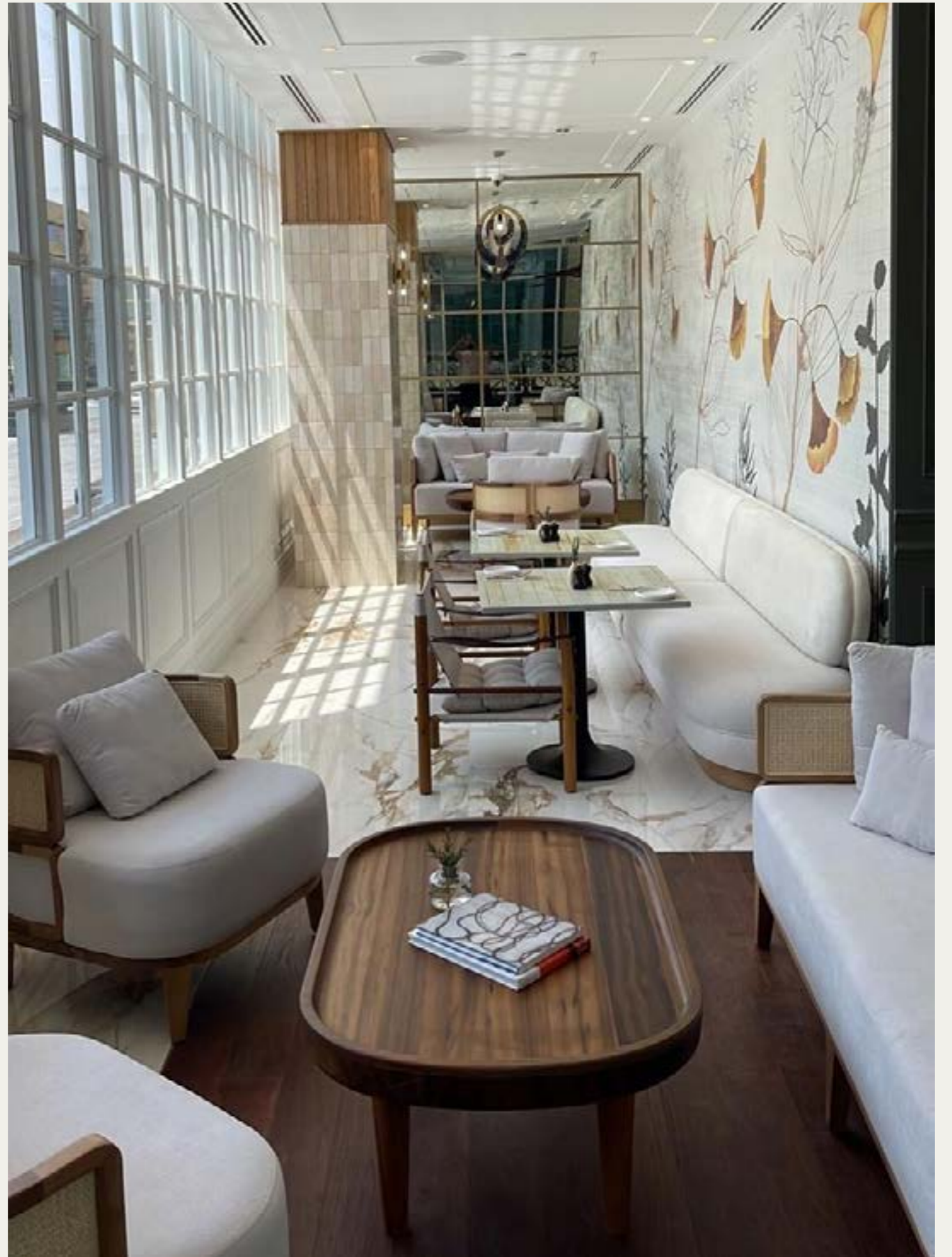
SHERATON ASTANA

Location: Kazakhstan



NOOA

Location: Riyadh, KSA



Furniture

Generally, all furniture items were manufactured by Kiln-Dried Teak & Walnut wood, top: Carrara marble.

Upholstery in Faux Leather,

3 sponge layers in various density to achieve the desired comfort.

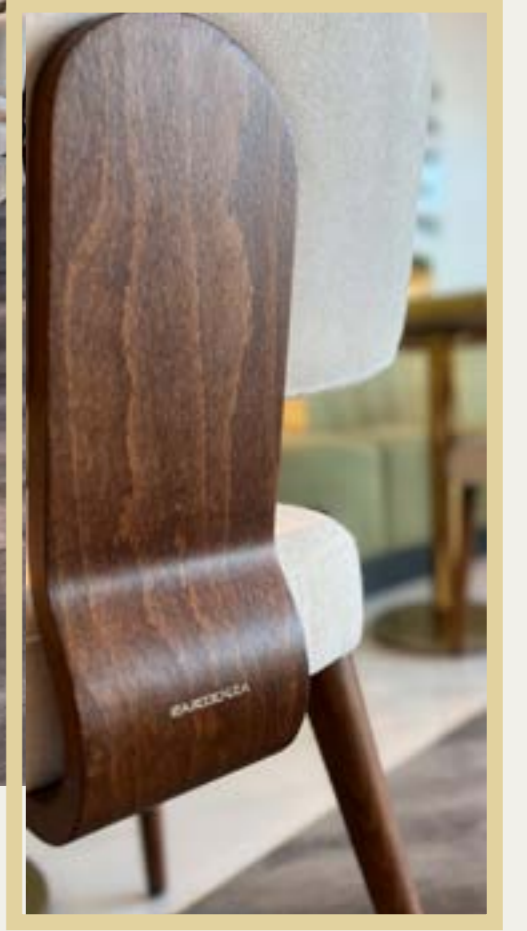
Skirting 3mm SS sheet in Antique Brass finish (PVD).



GODIVA

Location: Roshana - Jeddah, KSA





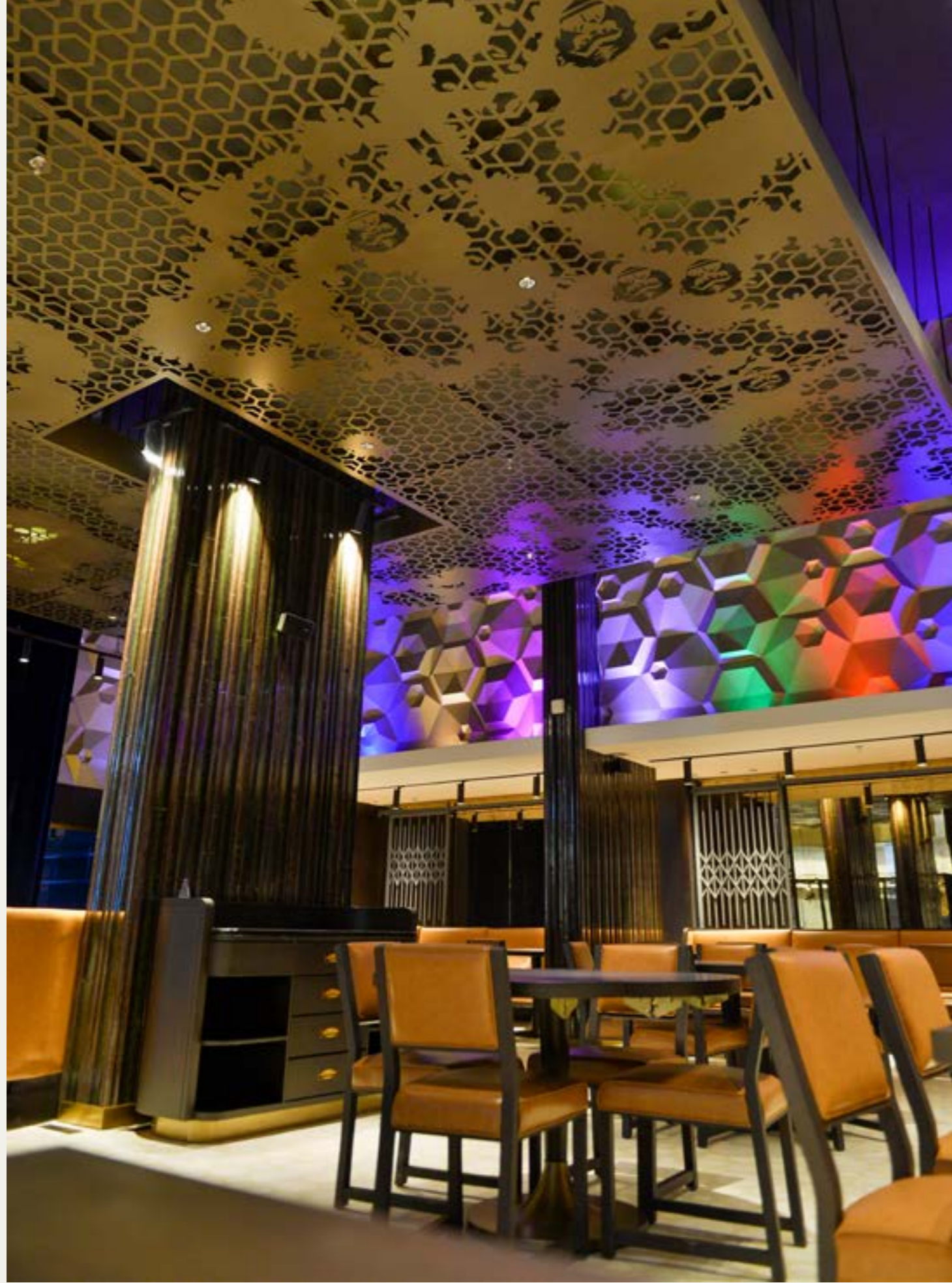
MONKEY HOUSE

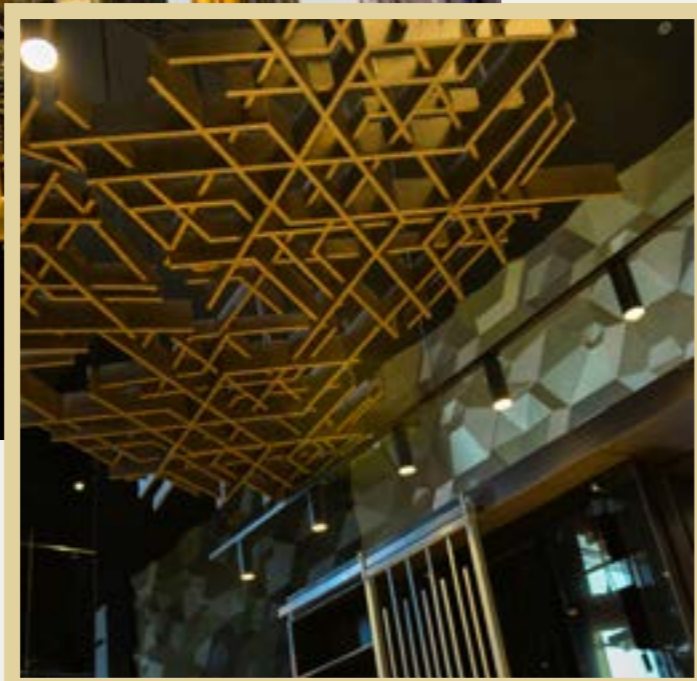
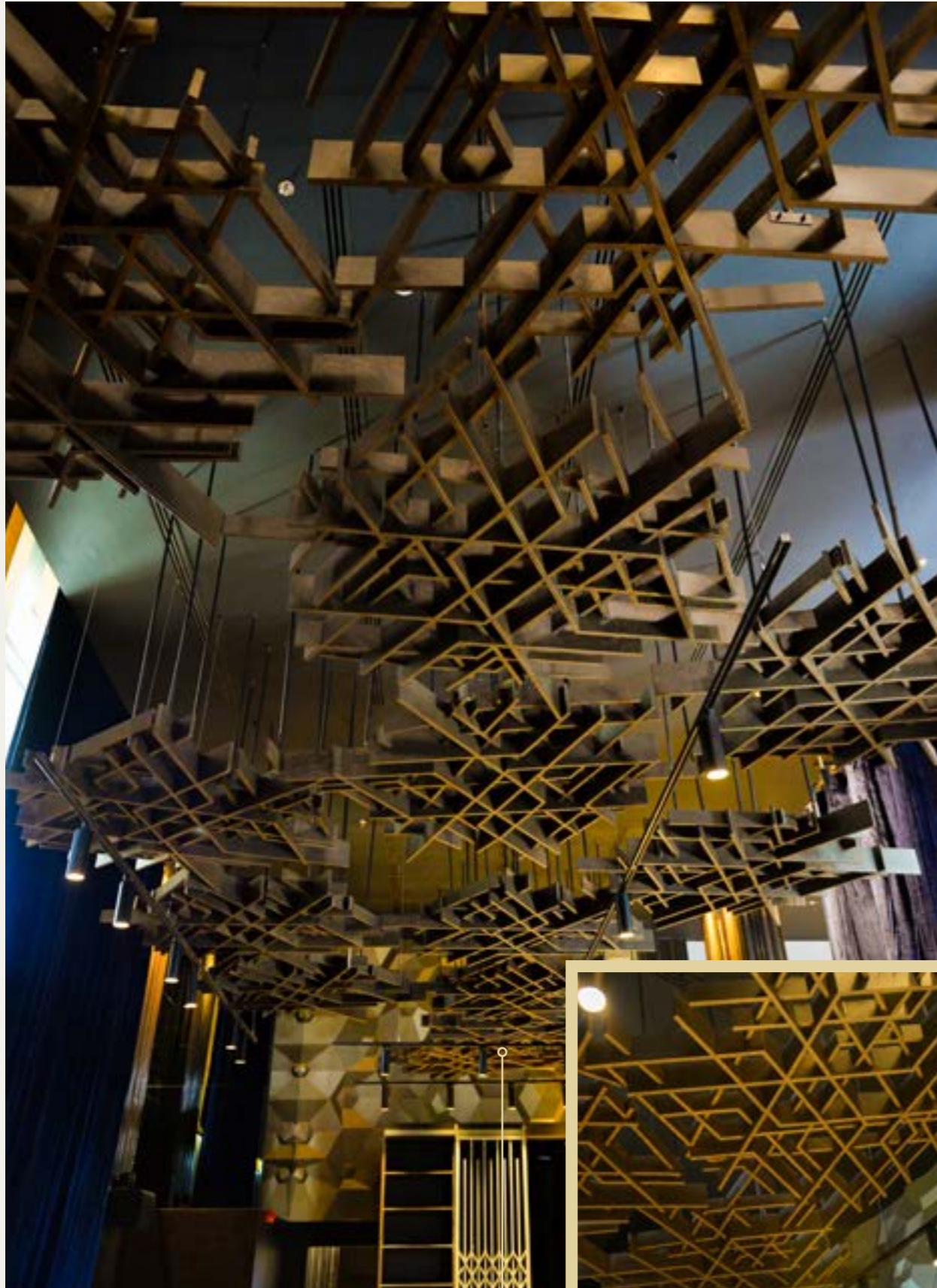
Location: Riyadh, KSA



Furniture

Generally, all furniture items were manufactured by, **Kiln-Dried solid Walnut**, Seatings upholstered in high quality **Faux Leather**, 2 sponge layers in various density to achieve the desired comfort. **Chairs** structures are solid **Beech** with solid **Walnut** legs. Upholstery in high quality **Fabric & Faux Leather**. **Antique Brass (Electroplating) finish SS tables legs**.





Acoustic Ceiling

Ceiling were manufactured by, 18mm MDF, lacquer painted in Antique Brass finish



RIXOS KRASNAYA POLYANA

Location: MOSCOW, RUSSIA



BURJ AL HAMAM

Location: Dabbab Street – Riyadh, KSA



SS Partition

5mm SS Sheet laser cut,
50mm SS Profile assembled as frames
in Antique Brass finish (Electroplating).

Hostess Station & Retail Wall

18mm Oak Veneered MDF, Natural Wicker panel
(Surrounded with Oak solid wood frames). Counter
top in Carrara marble surrounded with metal sheet
frame in Antique Brass finish (Electroplating)

30mm SS Profile as a
structure for shelves in Antique
Brass finish (Electroplating)



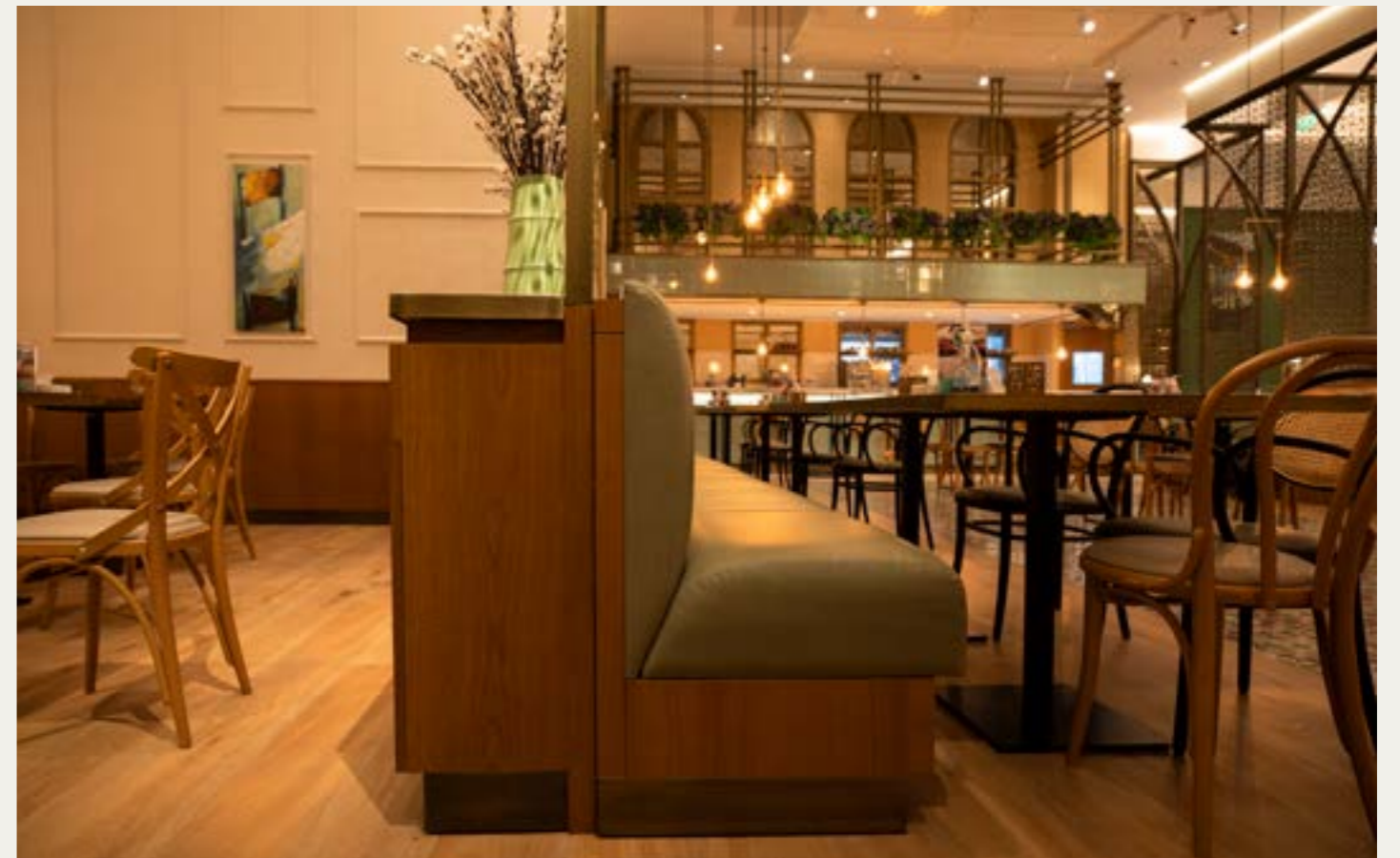
Pergola

Metal structure covered with 30mm
thickness Kiln-Dried Oak wood



Furniture

Generally, all furniture items were manufactured by, 18mm Oak veneered MDF, Top in Kiln-Dried Oak wood and Carrara marble. Upholstery in Faux Leather, 3 sponge layers in various density to achieve the desired comfort. Skirting 3mm SS sheet in Antique Brass finish (Electroplating).





Bar Counter

18mm MDF covered with green tiles and black Powder Coated metal strips.

Counter top in Carrara marble.
3mm SS sheet skirting in Antique Brass finish (Electroplating)



SHINE HOTEL

Location: Antalya, Turkey



CELLO

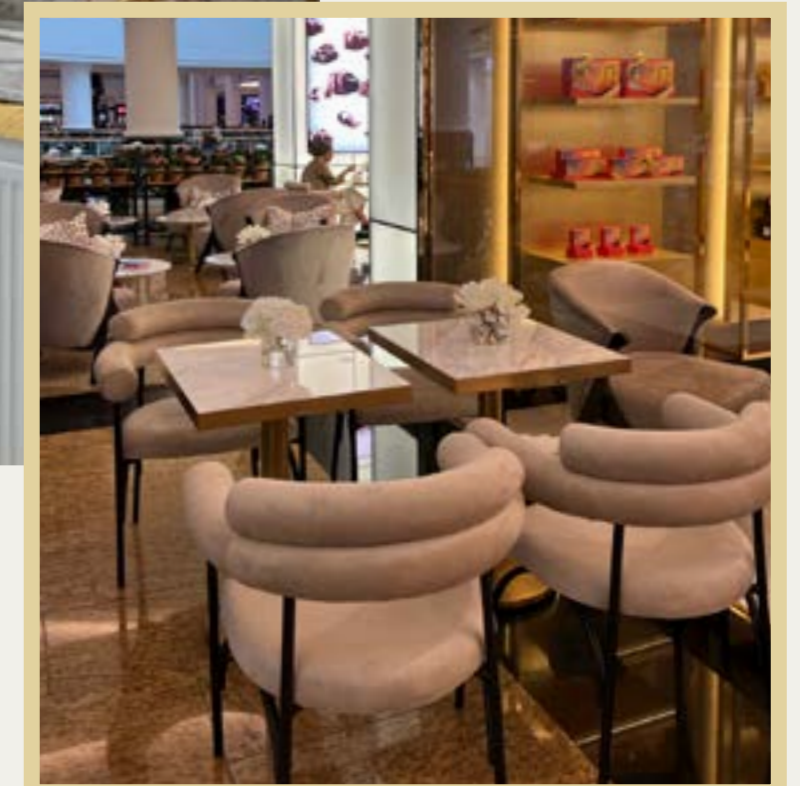
Location: Riyadh, KSA





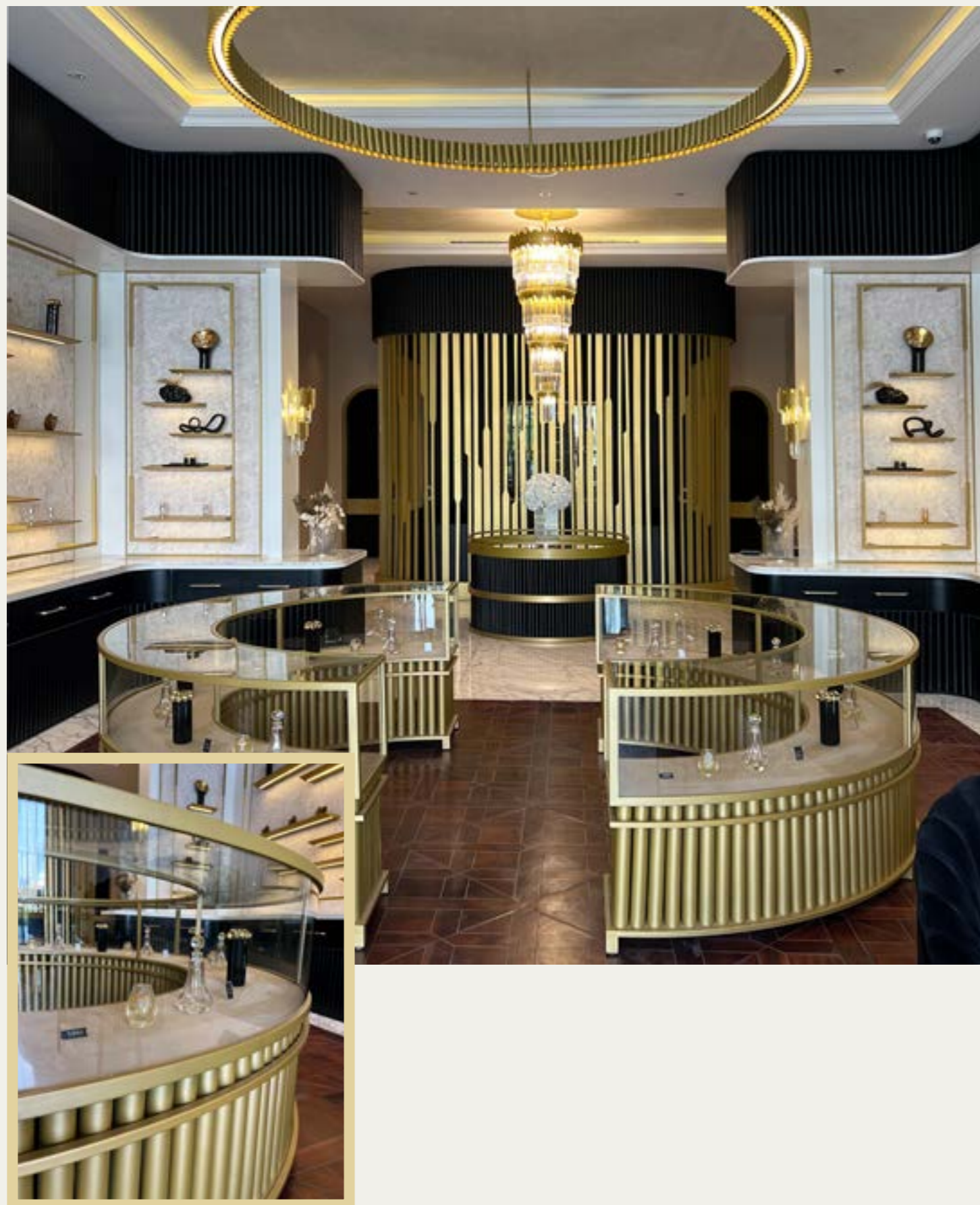
GODIVA

Location: MOE - UAE



HEKAYH

Location: Riyadh, KSA



DIFFERENT

Location: Tal Plaza - Riyadh, KSA



Furniture

Generally, all furniture items were manufactured by, 18mm **Oak** veneered MDF, **Seatings** upholstery in high quality **Fabric**, **3** sponge **layers** in various density to achieve the desired comfort with solid **Oak** arms. **Bergère** chair shell are pre-molded **polyurethane foam** and high quality **Fabric**

upholstered with solid **Oak** legs. Chairs structures are solid **metal** pipes white **Powder Coated** finish, Upholstery and backrest cushion in high quality **Fabric** Black **Powder Coated** tables leg with **Ceramic** tops.





Decorative Shelves & Window
 25mm SS profile & 5mm SS sheet
 laser cutting in Rose Gold finish
 (Electroplating), 10mm Tempered
 extra clear glass.

Display Counter
 18mm Oak veneered MDF with
 solid Oak decorative frame.
 3mm SS sheet (as an upper
 frame and skirting) in Rose Gold
 finish (Electroplating).
 Top White marble.



HILL HOTEL

Location: Taksim - Istanbul, Turkey



Furniture

Generally, all furniture items were manufactured by, 18mm **Oak** veneered MDF, **Seatings** upholstery in high quality **Fabric**, **3** sponge **layers** in various density to achieve the desired comfort with solid **Oak** arms. **Bergère** chair shell are pre-molded **polyurethane foam** and high quality **Fabric**

upholstered with solid **Oak** legs. Chairs structures are solid **metal** pipes white **Powder Coated** finish, Upholstery and backrest cushion in high quality **Fabric** Black **Powder Coated** tables leg with **Ceramic** tops.



CAMELLIA

Location: Riyadh Front – Riyadh, KSA



Furniture

Generally, all furniture items were manufactured by, **Walnut** veneered MDF, Seatings upholstered in high quality **Fabric**, **2** sponge **layers** in various density to achieve the desired comfort.

Bergère structures are solid **Beech** with solid **Walnut** legs. Upholstery in high quality **Fabric**.

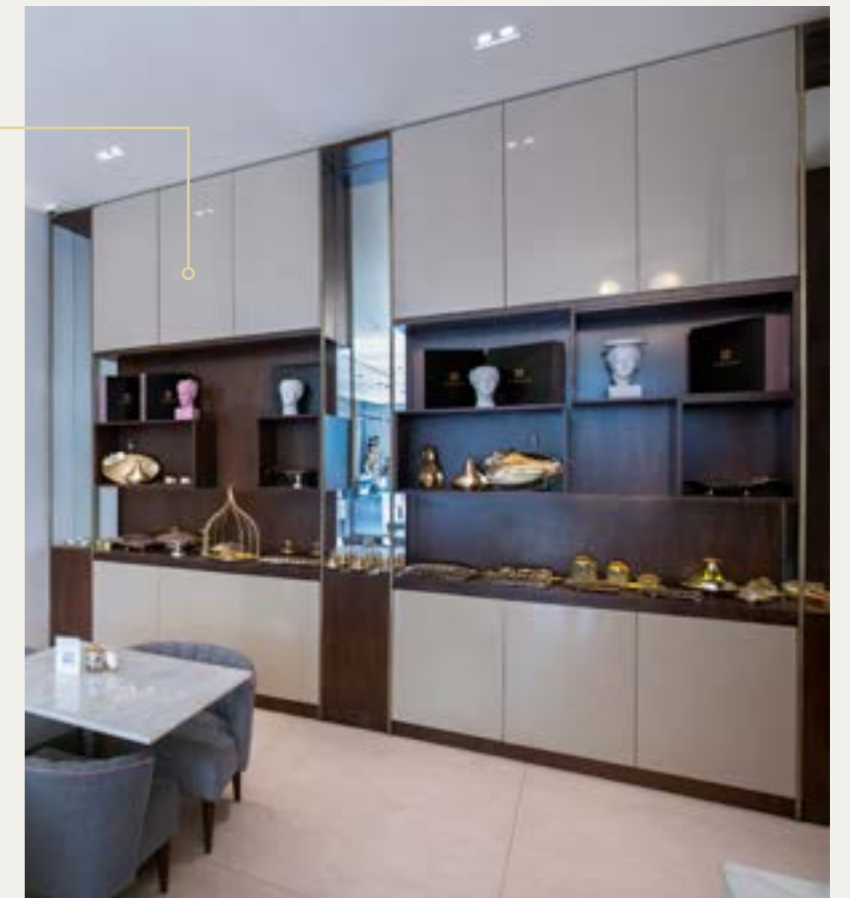
Antique Brass (**Electroplating**) finish **SS** tables legs, top in **Calacatta** marble.





Wall Unit
 18mm (Walnut veneered)
 & (U-V Painting) MDF.
 30mm Brass profile
 structure in Antique finish.

Display & Back Counter
 18mm Walnut veneered MDF with
 HPL Laminate.
 Display refrigerator covered with
 Calacatta marble and 10mm
 Tempered extra clear glass.



DOUBLE TREE HILTON

Location: Istanbul, Turkey



PATCHI

Location: The Zone – Riyadh, KSA



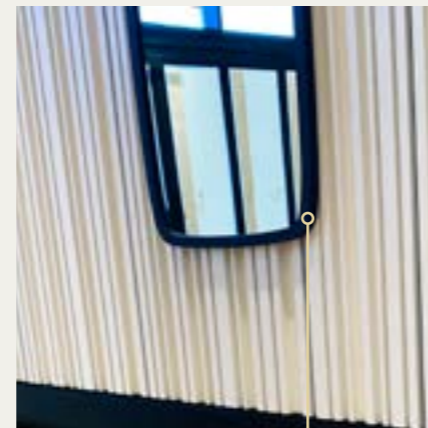
Low Table

23mm Black Tempered glass with beveled down edge to achieve Patchi concept. Black solid Oak legs.



Decorative Wall

50mm MDF, CNC cutting with various width and depth to achieve Patchi concept. U-V White painted.



Decorative Mirror

30mm Black Powder Coated frame, CNC layered cutting to achieve Patchi concept. 8mm Mirror glass.



Display Counter

18mm MDF clad with 1mm brushed aluminum sheet in Brass finish, 10mm Tempered extra clear glass top. Cabinet in U-V black painting finish.

LOGMA

Location: The Zone – Riyadh, KSA



Furniture

Generally, all furniture items were manufactured by, 18mm Oak veneered MDF, seatings upholstery in high quality Fabric, CNC cutted sponge.

Decorative ceiling in 18mm lacquer painted, Metal Mashrabiya and partition in black powder

coated finish. Chairs metal structures, Upholstery in high quality Fabric. Tables legs in black powder coated finish, Top in 35mm Kiln-Dried Oak wood. Painted Tempered glass.





CHUNK

Location: Diplomatic Quarter
– Riyadh, KSA

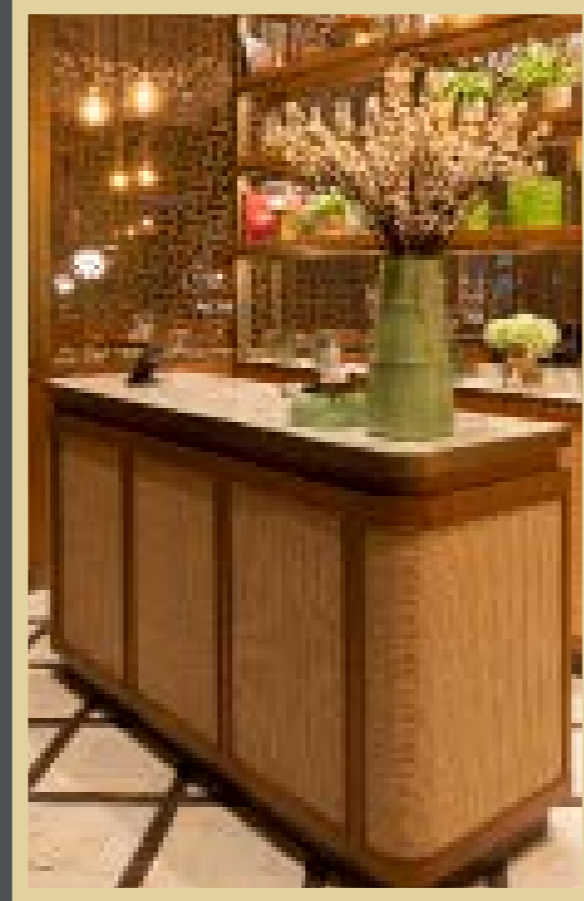


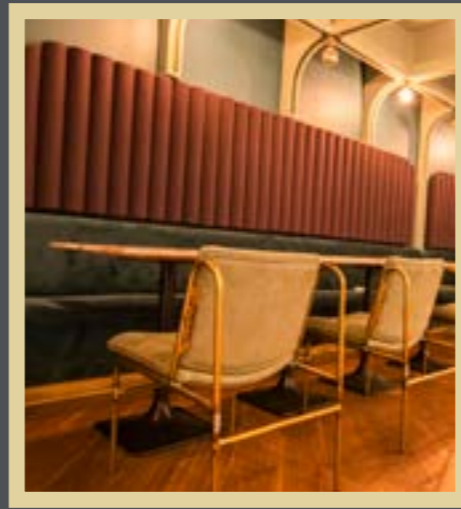
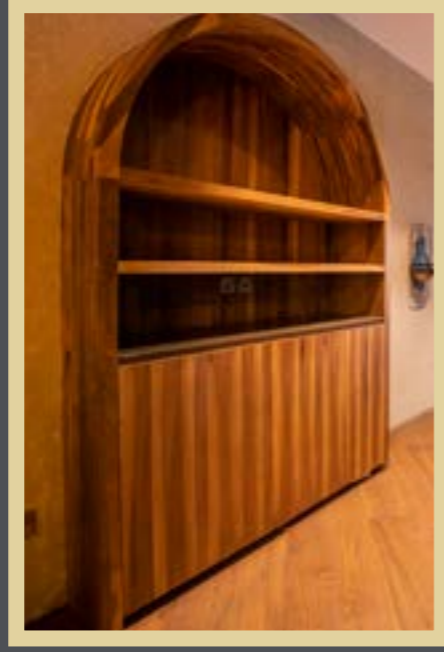
KEY CAFE

Location: Prestige Mall
– Jeddah, KSA



— HOW
MANUFACTURED







SHIPPING & PACKAGING

0 We reach the culmination of our process: the **packaging and shipping** phase. This also involves the careful selection of accompanying elements and accessories tailored to your project's unique needs. Every piece undergoes a **quality inspection** to ensure compliance with the design specifications before being transported to your venue. We will follow the shipping or freight method that best suits your preferences.



Our **packaging policy system** is to pack all our products in **wooden boxes** after being wrapped separately in an organized and accurate way.



Our packaging is safely supported & arranged to ensure a **harmless delivery** of the precious products.



Because small details always matter, **Partenza** takes care of the finer details while **wrapping** the products as well, to ensure **safe packaging**.

PARTENZA & SUSTAINABILITY



We collaborate, improve livelihoods, and measure our impact.

It's not about planting trees, it's about the overall result for the environment and for the people who live there. Regaining ecological integrity to enhance human well-being is key to ensure the forest will be protected for the long term.

Collaboration is fundamental to being able to Make Earth Cooler with trees.



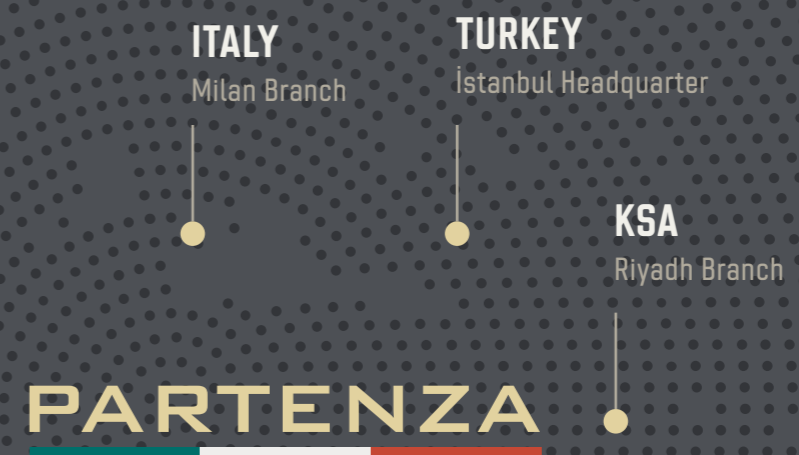
as we **TAKE** our needs from **NATURE**



we **GIVE NATURE** what it deserve



We imagine a world where communities and nations sustainably manage their forests and natural resources for the benefit of our climate, the environment and humanity.



CONTACT

☎ +90 531 021 15 15

✉ info@partenza-furniture.it

📍 [/partenzait](#)

PARTENZA[®]

www.partenza.it