



**PARTENZA<sup>®</sup>**

---

# OUR WORK PROCESS



## 1 CLIENT MEETING



## 2 CONCEPT & DESIGN



## 3 MANUFACTURING



## 4 PACKAGING & SHIPPING

# 1 CLIENT MEETING

..... QUOTATION /BOQ

..... TIME SCHEDULE

..... CONFIRM

We begin the process by gathering information from you. Our goal is to understand your project's unique requirements and discuss specifics like the required quantity, material specifications, and detailed plans that translate your design intent.

Our data collection includes preparing a bill of quantities (BOQ) that outlines the materials, quantities, and associated costs. We will then provide a quotation detailing the estimated cost, payment terms, and a schedule to help estimate the project's duration.

Once you confirm the order, we will move to the next step.

## QUOTATION /BOQ

PARTENZA®		Price Quote											
BILL TO: Strong Line		ENVIRONMENTAL MANAGEMENT SYSTEM ISO 14001		SAFETY AND HEALTH MANAGEMENT SYSTEM ISO 45001:2018		CERTIFIED COMPANY ISO 9001:2015		Quote No: #615128				Date: 11.05.2023	Valid For:
Project Name: Em Sherif Café													
Item No.	Image Reference	Dimension (cm)				FABRIC	MARBLE	ITEM	Qty	Unit	UNIT PRICE (USD)	TOTAL PRICE (USD)	
W	D	R	H	seating height	LM	m2	Type Code Reference	Description/Materials					
<b>DIV.06-WOOD, PLASTICS, AND COMP</b>													
<b>Architectural Wood Casework</b>													
FJW-01		91.5	60		316.5			Cabinet women-washing area JN-13	2	nos	\$ 1,680.00	\$ 3,360.00	
FJW-02		83	60		316.5			Cabinet men-washing area JN-15	2	nos	\$ 1,680.00	\$ 3,360.00	
FJW-03		152.9	60		270.0	1		Cabinet prayer room JN-12	1	nos	\$ 1,750.00	\$ 1,750.00	
FJW-04		210	64		185.0	1		Cabinet Cashier room JN-09 Revised Drawing needed	1	nos	\$ 1,200.00	\$ 1,200.00	
FJW-05		68	60		230.0	1		Cabinet Cashier room JN-10 Confirm dimensions as per site	1	nos	\$ 1,800.00	\$ 1,800.00	
FJW-06		245.4	64		265.0	1		Cabinet Dining area JN-19 Confirm dimensions as per site / Electrical panel to be coordinated with site	1	nos	\$ 1,120.00	\$ 1,120.00	
FJW-07		193	47.5 62.5		265.0			Cabinet Dining-WC Area JN-21 EXTRA Confirm dimensions as per site	1	nos	\$ 1,800.00	\$ 1,800.00	
<b>Wall Cladding</b>													
FJW-07			1.8					MDF board walling ground floor Revise drawing according to sections	67	m2	\$ 173.30	\$ 11,610.10	

FI-12		252	52	127.5						Mirror women JN-17	<ul style="list-style-type: none"> <li>•18 mm Plywood support with 6mm extra clear mirror</li> <li>•5mm thick SS frame</li> </ul>	1	nos	\$ 700.00	\$ 700.00
<b>Office Furniture</b>															
FO-01		160	60	75.0						Desk JN-11	<ul style="list-style-type: none"> <li>•18mm veneered MDF, Eucalyptus Tabu finish</li> <li>•L: 300mm handle, white finish</li> <li>•Blum rails</li> <li>•Lock</li> </ul>	1	nos	\$ 900.00	\$ 900.00
FO-02		254.6	38	92.0						Desk Shelving JN-11 EXTRA	<ul style="list-style-type: none"> <li>•Wall mounted 50mm thick veneered MDF shelves, Eucalyptus Tabu finish</li> </ul>	1	nos	\$ 900.00	\$ 900.00
<b>Restaurant Furniture</b>															
FR-01		175	85	120.0					1	Reception Desk 02 JN-01	<ul style="list-style-type: none"> <li>•10mm thick Eucalyptus veneered MDF strips</li> <li>•18mm Eucalyptus veneered MDF</li> <li>•Top:30mm white Sivec marble</li> <li>•Skirting:50mm high black corian</li> <li>•Blum rails</li> <li>•Plastic gourmet for cables is excluded</li> </ul>	1	nos	\$ 2,800.00	\$ 2,800.00
FR-02		259.5	50	90.0					1	Service table 04 JN-02	<ul style="list-style-type: none"> <li>•External: 18mm MDF covered with Rattan polyester, wicker pattern</li> <li>•Internal: 18mm laminated MDF, as per approved sample</li> <li>•Top:30mm Corian</li> <li>•Legs: black powder coated metal</li> <li>•Trims:0.7-1.5mm black powder coated metal sheet</li> <li>•Cabinet door frames: 5mm black powder coated metal</li> <li>•Black powder coated handles</li> <li>•Blum rails and hinges</li> </ul>	1	nos	\$ 2,000.00	\$ 2,000.00
FR-03		205	60	90.0					1	Service table 03 JN-03	<ul style="list-style-type: none"> <li>•Internal: 18mm Eucalyptus veneered MDF</li> <li>•External: 18mm Eucalyptus veneered MDF</li> <li>•Top:30mm Corian</li> <li>•Legs: black powder coated metal</li> <li>•Trims:0.7-1.5mm brushed SS sheet</li> <li>•Blum rails and hinges</li> <li>•Adjustable shelves</li> </ul>	1	nos	\$ 1,800.00	\$ 1,800.00
FR-04		60	50	90.0					4	Service table 01 JN-04	<ul style="list-style-type: none"> <li>•External: 18mm MDF covered with Rattan polyester, wicker pattern</li> <li>•Internal: 18mm laminated MDF, as per approved sample</li> <li>•Top:30mm Corian</li> <li>•Legs: black powder coated metal</li> <li>•Trims: 0.7-1.5mm black powder coated metal sheet</li> <li>•Cabinet door frames: 5mm black powder coated metal</li> <li>•Black powder coated handles</li> <li>•Blum rails and hinges</li> <li>•Adjustable shelves</li> </ul>	4	nos	\$ 1,800.00	\$ 7,200.00
FR-05		100	50	90.0					8	Service table 04 JN-05	<ul style="list-style-type: none"> <li>•External: 18mm MDF covered with Rattan polyester, wicker pattern</li> <li>•Internal: 18mm laminated MDF, as per approved sample</li> <li>•Top:30mm white Sivec marble</li> <li>•Legs: black powder coated metal</li> <li>•Trims: 0.7-1.5mm black powder coated metal sheet</li> <li>•Cabinet door frames: 5mm black powder coated metal</li> <li>•Black powder coated handles</li> <li>•Blum rails and hinges</li> <li>•Adjustable shelves</li> </ul>	8	nos	\$ 1,800.00	\$ 14,400.00
FR-06		140	77	110.0					1	Reception Desk JN-06	<ul style="list-style-type: none"> <li>•18 lacquered plywood in glossy finish, RAL 1035</li> <li>•Drawers: 18 mm Sycamore veneered MDF</li> <li>•Top: 20mm white Sivec marble</li> <li>•Bended metal support</li> <li>•Skirting: 30mm high black corian</li> <li>•Lock</li> <li>•Blum rails</li> <li>•Plastic gourmet for cables is excluded</li> </ul>	1	nos	\$ 1,760.00	\$ 1,760.00
<b>Wall Mounted Arts</b>															
EJ-04		180	60	98.5						Planter outdoor-FF Type - C JN-23 c	<ul style="list-style-type: none"> <li>Frame: <ul style="list-style-type: none"> <li>•30x30mm black powder coated metal structure, RAL 9005</li> <li>•6 heavy duty wheels with locks</li> </ul> </li> <li>Planter Box: <ul style="list-style-type: none"> <li>•10-18mm plywood structure covered with black powder coated metal sheet</li> <li>•Bottom: 3-5mm black powder coated perforated metal sheet, RAL 9005</li> <li>•Drawers: 3-5mm black powder coated metal sheet, RAL 9005</li> <li>•Rattan polyester wicker pattern, as per approved sample</li> <li>•Accessories, as per approved sample</li> <li>•Plants, soil, and electrical sockets are excluded</li> </ul> </li> </ul>	1	nos	\$ 1,800.00	\$ 1,800.00
EJ-05		65	50	90.0					1	Hostess Desk JN-24	<ul style="list-style-type: none"> <li>•Exterior: Rattan polyester wicker pattern, as per approved sample</li> <li>•Interior: 18mm laminated MDF, as per approved sample</li> <li>•Skirting and frames: 1-3mm black powder coated metal sheet</li> <li>•20mm White sivec marble top</li> <li>•L:60mm powder coated metal handle</li> <li>•Blum rails</li> <li>•Plastic grommet for cables is excluded</li> </ul>	1	nos	\$ 1,800.00	\$ 1,800.00
EJ-06		75	50	82.0					1	Service Desk 1 outdoor JN25	<ul style="list-style-type: none"> <li>•Exterior: Rattan polyester wicker pattern, as per approved sample</li> <li>•Interior: 18mm laminated MDF, as per approved sample</li> <li>•Skirting and frames: 1-3mm black powder coated metal sheet</li> <li>•20-30mm White sivec marble top</li> <li>•L:60mm powder coated metal handle</li> <li>•Blum rails and hinges</li> </ul>	10	nos	\$ 1,800.00	\$ 18,000.00
EJ-07		115	50	82.0					1	Service Desk 2 outdoor JN26	<ul style="list-style-type: none"> <li>•Exterior: Rattan polyester wicker pattern, as per approved sample</li> <li>•Interior: 18mm laminated MDF, as per approved sample</li> <li>•Skirting and frames: 1-3mm black powder coated metal sheet</li> <li>•20-30mm White sivec marble top</li> <li>•L:60mm powder coated metal handle</li> <li>•Blum rails and hinges</li> </ul>	1	nos	\$ 2,200.00	\$ 2,200.00
<b>Signage</b>															
ES-01		121	3	70.0						Signage 1 GF JN22 a	<ul style="list-style-type: none"> <li>•2mm black aluminium letters</li> <li>•White plexi back panel</li> <li>•LED lights 2700k</li> </ul>	1	nos	\$ 1,076.00	\$ 1,076.00
ES-02				190.0						Decorative Lighting	<ul style="list-style-type: none"> <li>•Green plexi with back LED lights</li> </ul>	11	nos	\$ 150.00	\$ 1,650.00

SUBTOTAL	\$ 21,173.11
DISCOUNT	\$ 20,958.88
SUBTOTAL LESS DIS.	\$ 214.23
VAT RATE %	
VAT	\$ 0.00
SHIPPING/HANDLING	\$ 0.00
Quote Total	\$ 214.23

**Bank Details for Payment:**  
PARTENZA MÜHENDİSLİK İNŞAAT İÇ VE DIŞ TİCARET  
LIMITED ŞİRKETİ  
Kuveyt Türk Katılım Bankası A.Ş.  
IBAN: TR44 08301 0007 10001 0007 0001 01  
SWIFT: PTZNT333

**Payment Terms**  
50% Down Payment  
20% Progress 50%  
20% Progress 80%  
10% Before Shipping

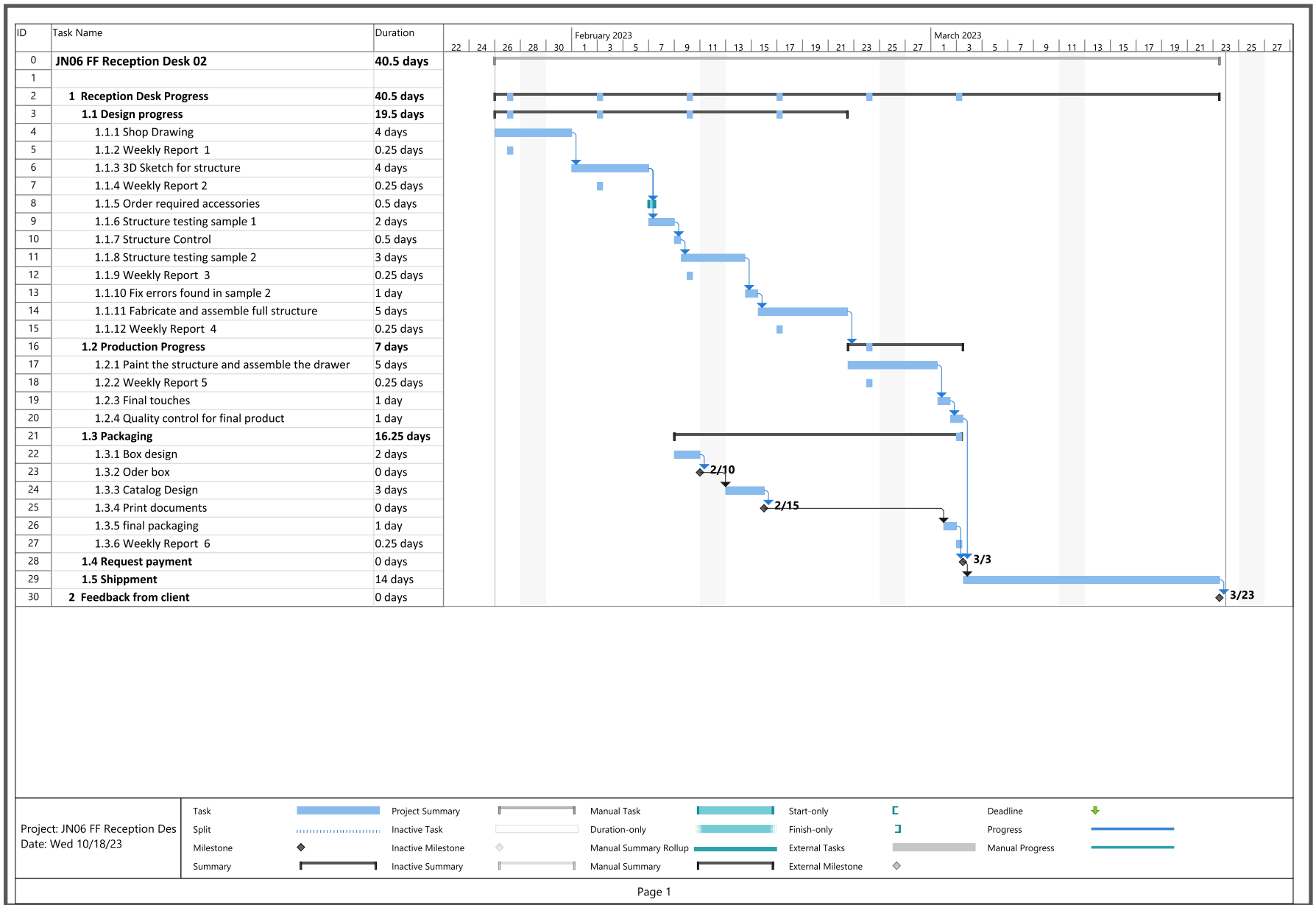
**Notes & Terms**  
1.This Price Quote are 0% VAT (in case Partenza made the exporting), otherwise an addition 18%, 8% VAT shall be added.  
2.Lead time is 90 working days starting after one day of receiving the payment.  
3.This Price Quote are including packing fees with pallets.  
4. Partenza pledges the uploading of good to containers.  
5. Partenza is not responsible for the improper shipment or the safety of the goods after being loaded into the container.  
6. Partenza will bear the costs of freight .



FR-06		140	77	110.0					1	Reception Desk JN-06	<ul style="list-style-type: none"> <li>•18 lacquered plywood in glossy finish, RAL 1035</li> <li>•Drawers: 18 mm Sycamore veneered MDF</li> <li>•Top: 20mm white Sivec marble</li> <li>•Bended metal support</li> <li>•Skirting: 30mm high black corian</li> <li>•Lock</li> <li>•Blum rails</li> <li>•Plastic gourmet for cables is excluded</li> </ul>	1	nos	\$ 1,760.00	\$ 1,760.00
-------	--	-----	----	-------	--	--	--	--	---	-------------------------	---	---	-----	-------------	-------------



# TIME SCHEDULE



**Lujain Zaibak** <lujain@partenza.it>  
to Ibrahim ▾

To whom it may concern,

I trust this message finds you well. I am writing to formally confirm that your down payment for the project was well received, and we are eager to proceed with the manufacturing phase.

If you require any further documentation or information from our end to facilitate the commencement of the project, please do not hesitate to reach out.

Thank you for your prompt attention, and we anticipate a successful project together.

Warm regards,  
Lujain Zaibak



**Lujain Zaibak**  
Projects Manager  
Manufacturing | PARTENZA  
+90 537 865 29 04

+90 531 021 15 15  
Info@partenza.it  
https://partenza.it



# 2

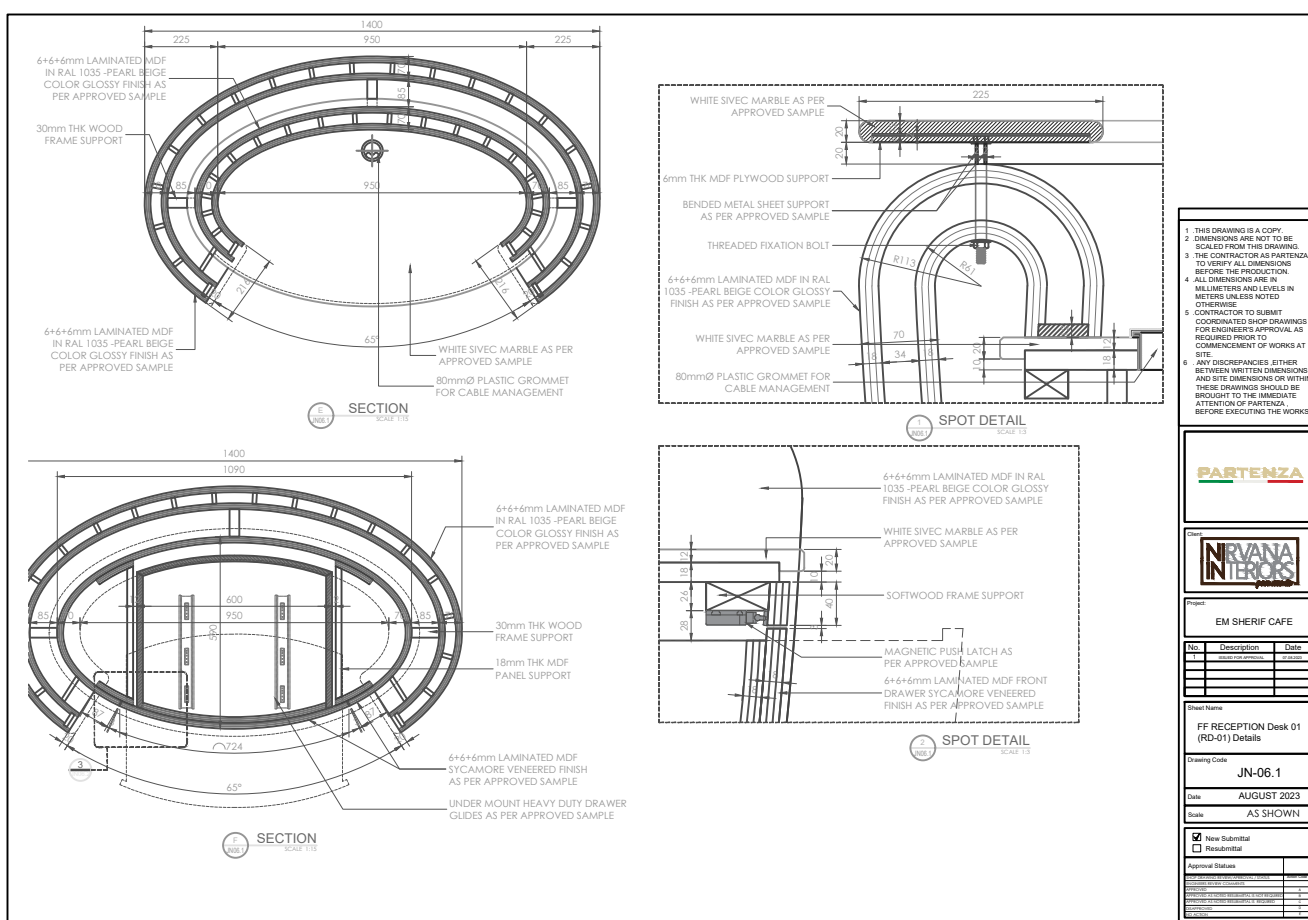
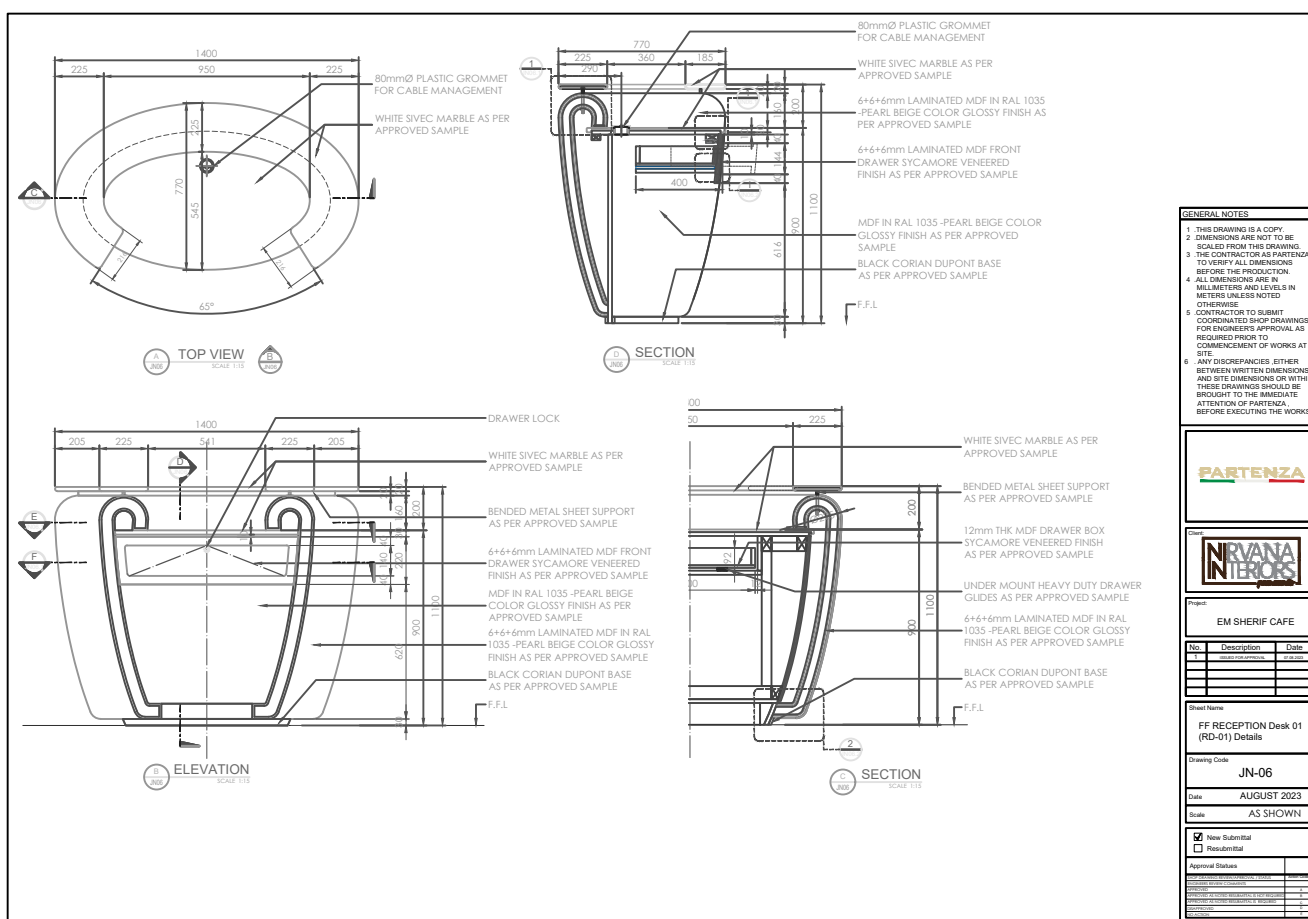
# CONCEPT & DESIGN

SHOP DRAWING

MATERIALS

SAMPLES /MOCKUP

CONFIRM

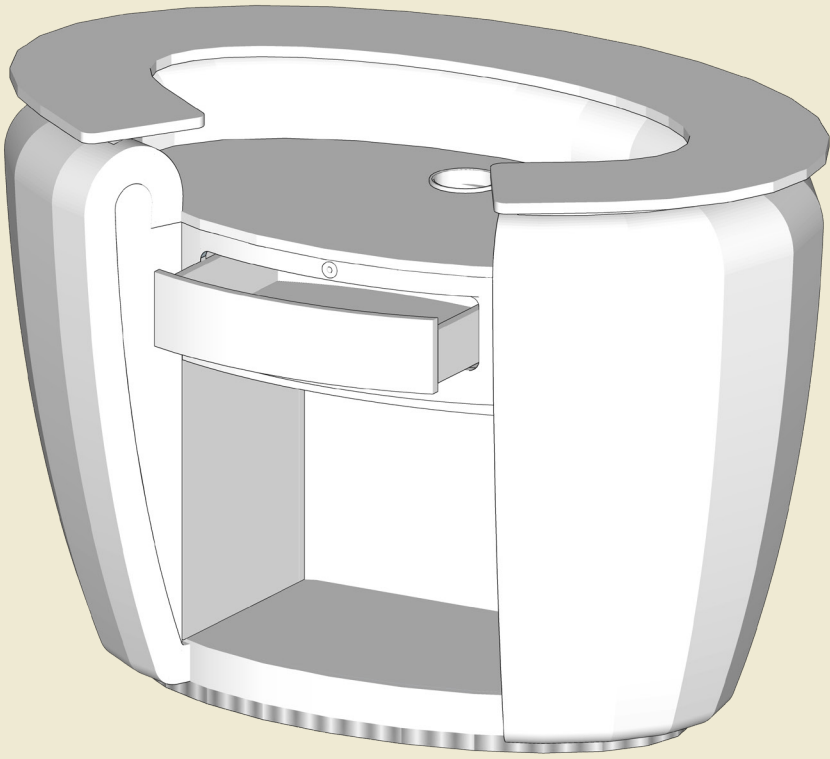


**MATERIAL AND DESIGN SELECTIONS**

**ARE**

**METICULOUSLY FINALIZED,**

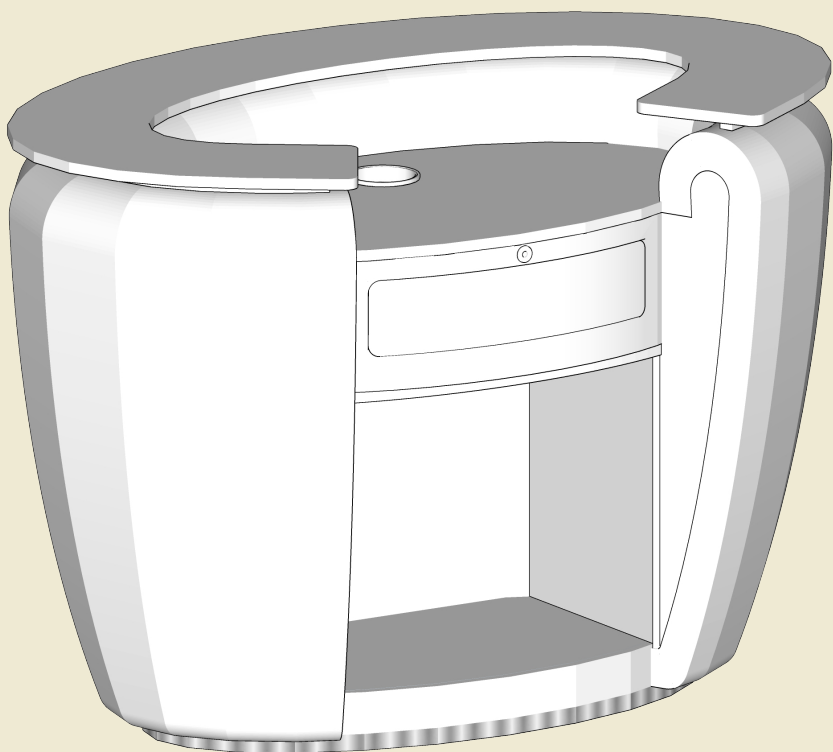
**SETTING THE STAGE FOR A SEAMLESS JOURNEY FROM CONCEPT TO CREATION.**



**Based on the information you've provided, we will present a catalog of photos and illustrations (known as a Mood Board) to demonstrate our vision for your project.**

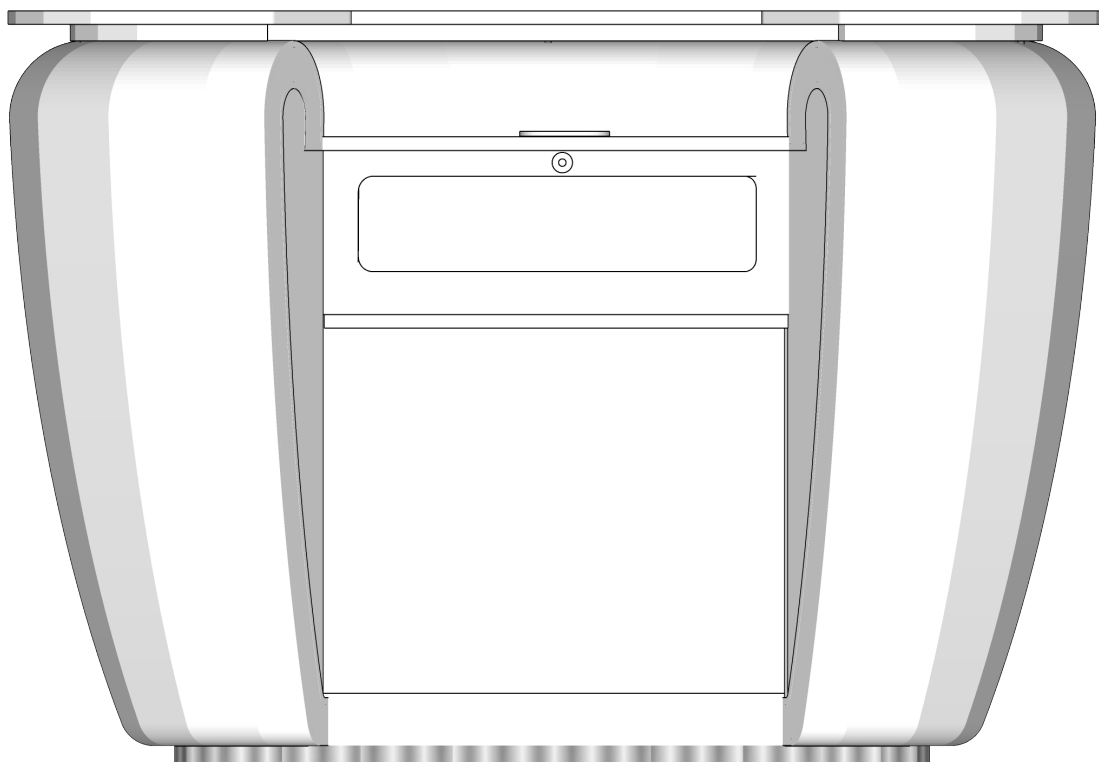
**We will also create a 3D model so you can review the details.**

**Our designers are prepared to develop new designs for hotel suites, villas, hospitals, restaurants, and cafes.**



**We will provide a materials catalog, shop drawings, and a sample mockup to help envision the final product.**

**At this stage, we may request an initial payment - a financial commitment that allows us to finalize pricing.**





# 3 MANUFACTURING

WEEKLY REPORTS

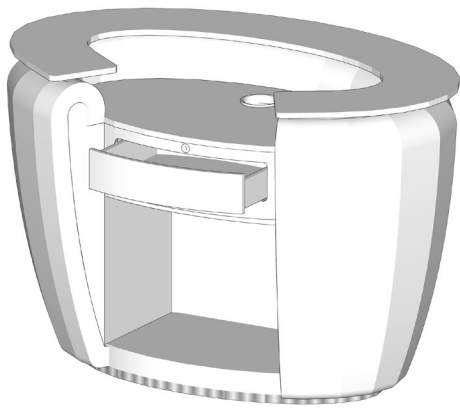
QUALITY CONTROL

**PARTENZA**  
YOUR VISION IN EVERY DETAIL

## RECEPTION DESK

Weekly Report  
20.10.2023

OUR WEEKLY REPORT



1

## RECEPTION DESK

**1.Materials :**  
Materials are ordered and received

**3.Shipping :**  
Item to be shipped on 22.10.2023

**2.Manufacturing :**  
- Wooden structure was assembled  
- MDF was painted  
- Corian top was cut and assembled



Manufacturing Progress

84%



☎ +36 531 021 15 15 | 🌐 www.partenza.it | 📱 partenza-furniture | 📍 Mahmutbey District Tescaggi Street, Ağaoglu My Office 212 Bağcılar / İSTANBUL



Once we have the finalized design plan and all necessary materials, our skilled engineers and artisans begin work to bring your project to life.

We conduct an internal project analysis to scrutinize and refine the manufacturing drawings, ensuring perfect alignment with your desired outcome.

We produce everything in-house, from hotel lobby furniture to restaurant dining areas.

This is where our creative and experienced team unites to transform your design concepts into tangible realities.











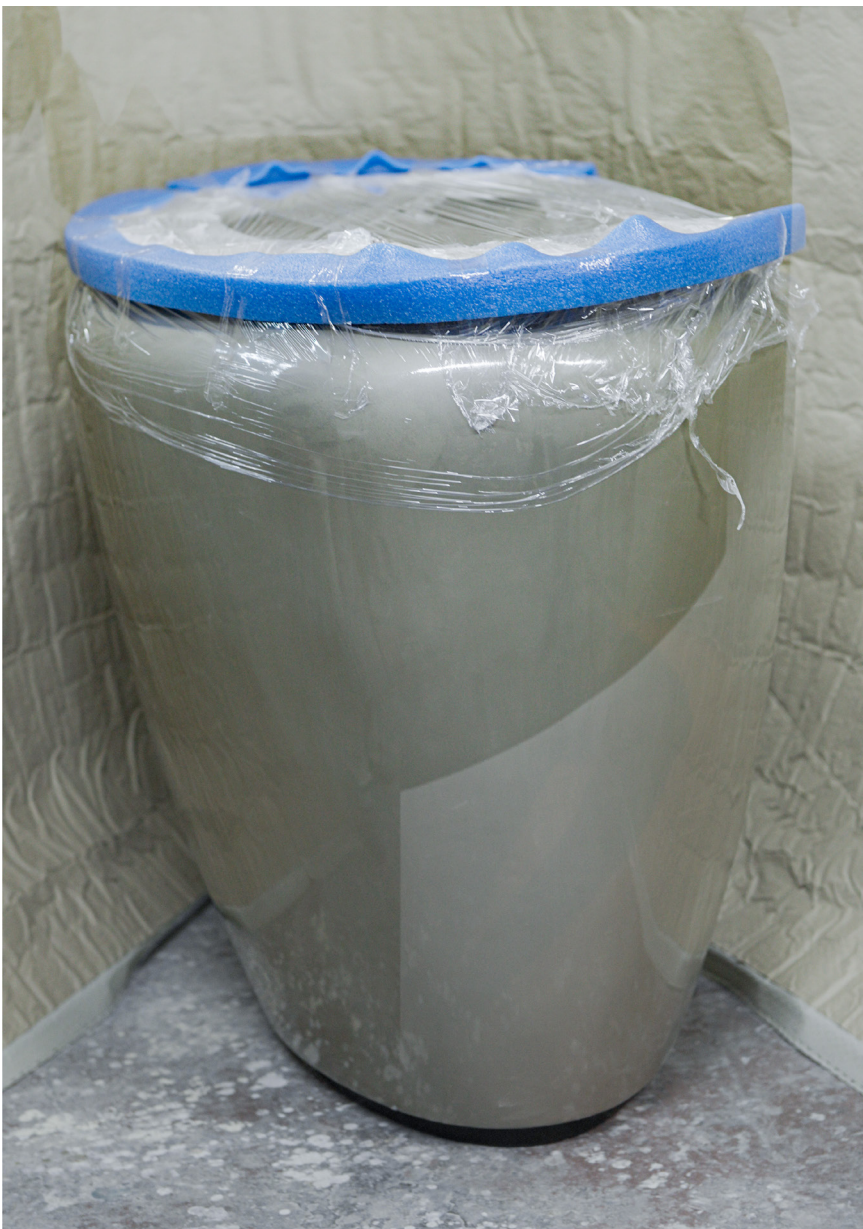


# 4 PACKAGING & SHIPPING

INSPECTION

PACKAGING

DELIVERY



Here, we reach the final stage: Packaging and shipping. This involves carefully selecting any accompanying elements and accessories tailored to your project's unique needs.

Every piece undergoes quality inspection to ensure it meets the design specifications before shipment to your venue.

We will follow the optimal shipping or freight method based on your preferences.









---

## CONTACT

+ 90 531 021 15 15

info@partenza.it

/partenza\_official